

SAF Supply Chain Analysis in the Southeastern U.S.

T. Edward Yu & Burton C. English
Professor in Agricultural & Resource Economics
University of Tennessee

Regional Advantage for SAF

- Sizeable forest area (privately held; certified sustainable; RINs approved)
- An acting forest products industry
- Essential infrastructure in place (e.g., refineries, pipelines, etc.)
- Rapid population growth
- Significant end-user presence
- Motivated regional development

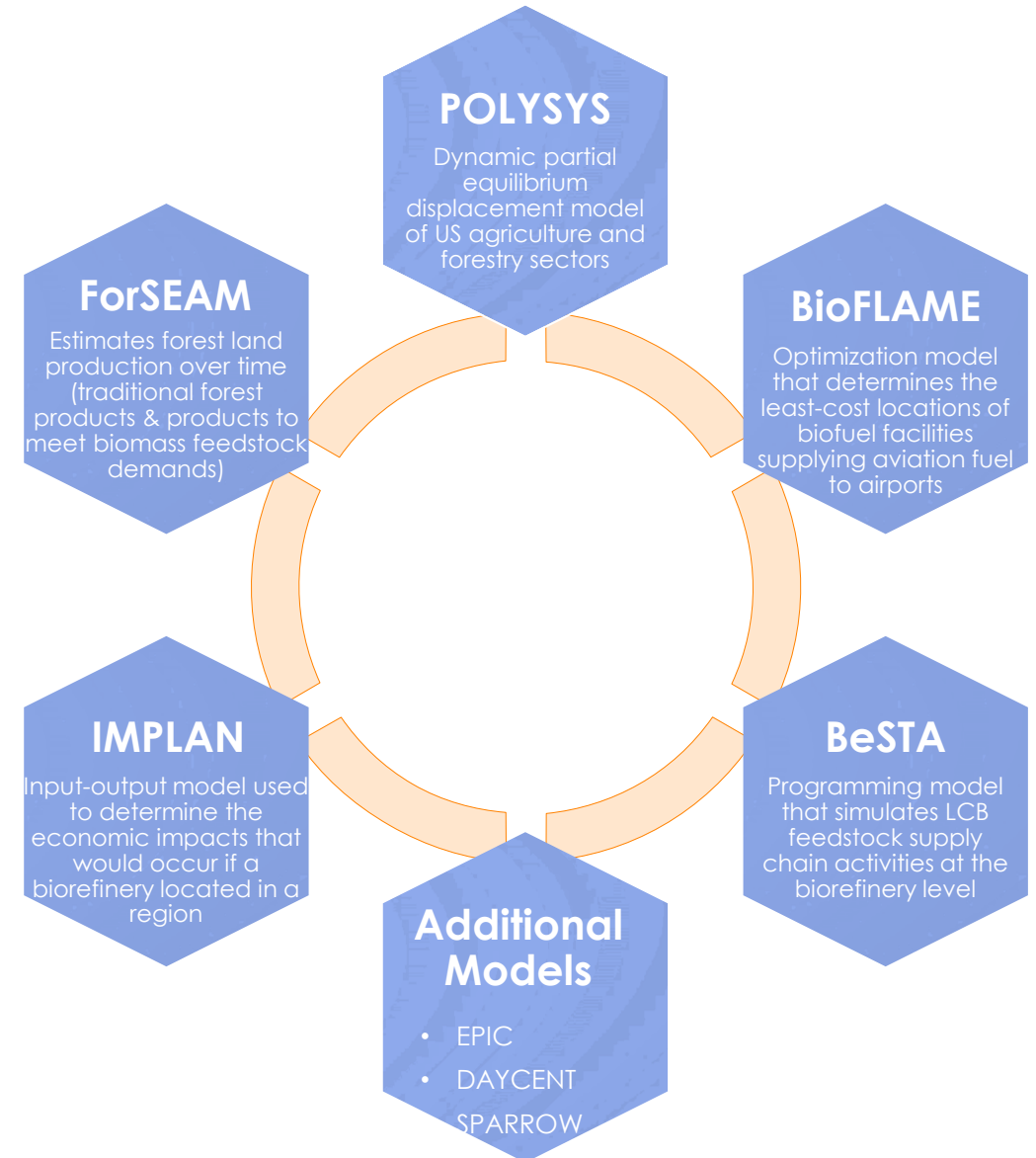


Regional Development Analysis

- Site Analysis
 - Identify facility siting and biomass availability
 - Cost and environmental indicators
- Workforce Analysis
 - Assess workforce availability and potentials
- Economic Impact Analysis
 - Project the net impact of SAF development on local economy and employment

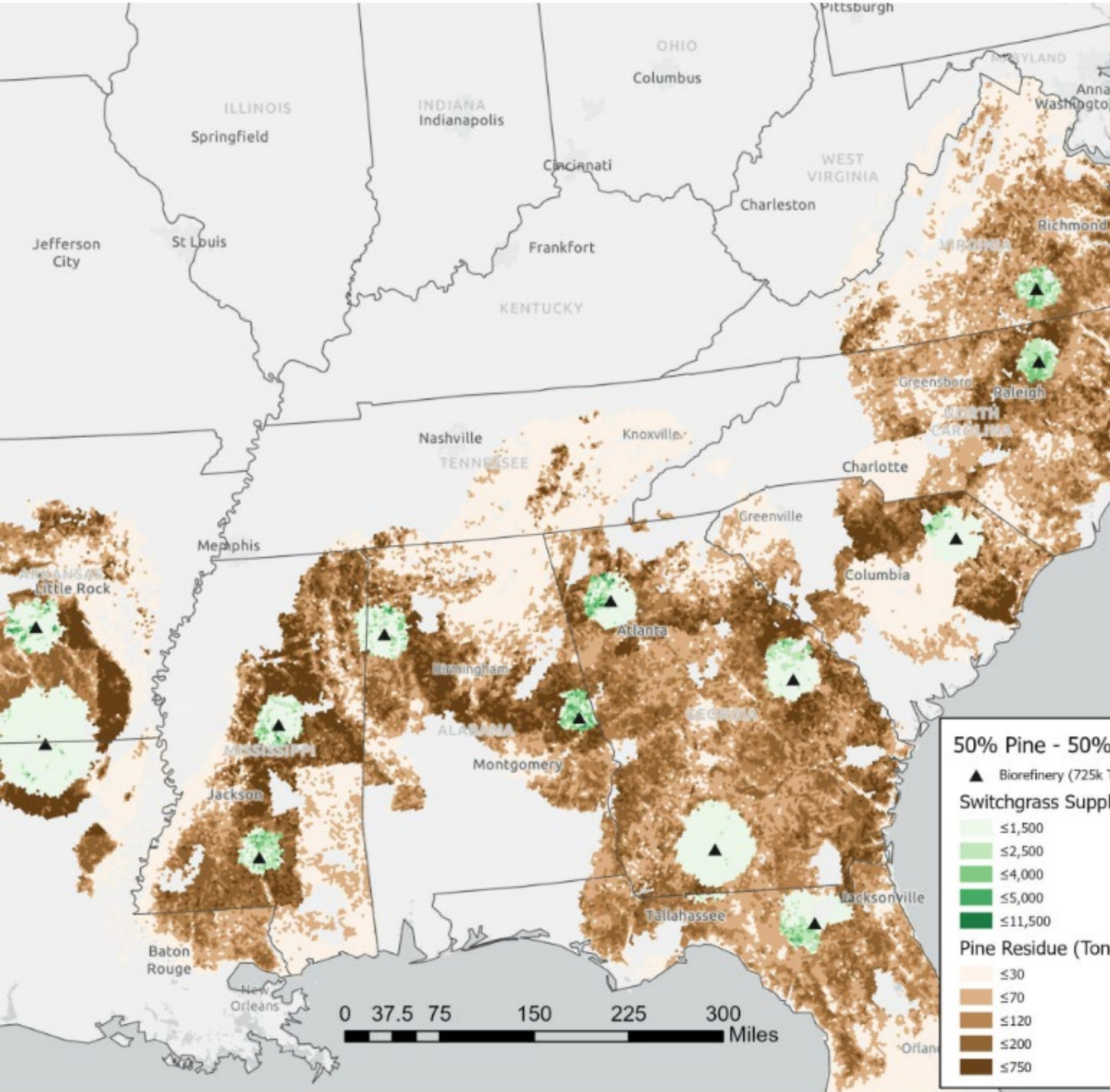
Decision Model Portfolio

- A set of modeling tools has been built by a team largely funded by multiple government agencies. To date most of the tools have been used by government policy makers and the research community.



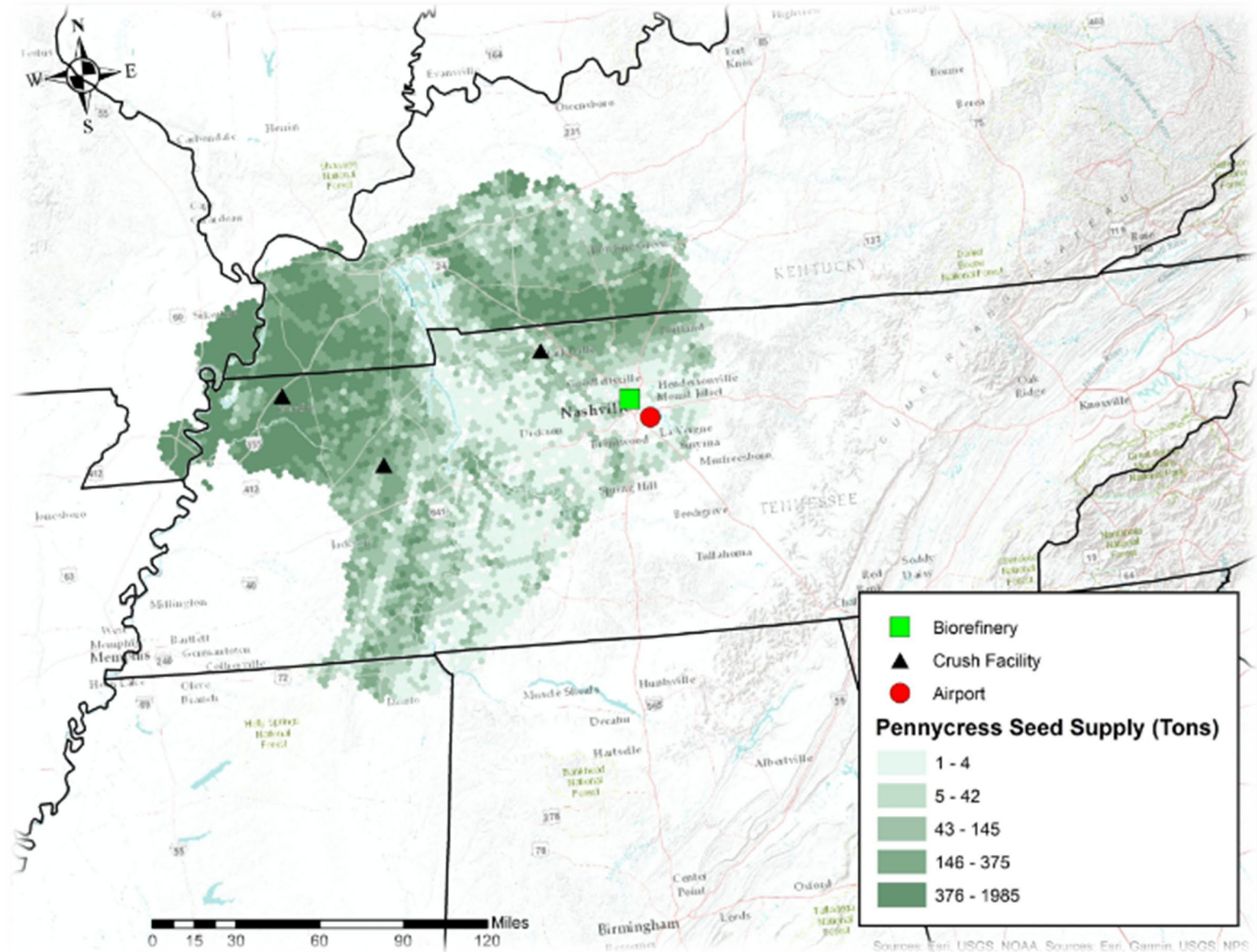
Applications of the Decision Model System

- Using switchgrass and pine residues as feedstock for SAF in the Southeast Region
- 13 biorefineries each with a capacity of 725k dt per year when using 50/50 switchgrass and pine
- Average feedstock cost: \$61.48 per dry short ton



Nashville SAF from Pennycress

- Pennycress was produced as winter cover crop
- Three crush facilities are required & are located at
 - Union City, TN
 - Clarksville, TN
 - Huntington, TN
- Total Feedstock Cost Delivered to Crush Facilities \$115.7 million



Stakeholder's Meeting

- Working with the Center for Natural Capital to conduct stakeholder's meetings for the Central Appalachian region.
- Monthly meetings were held from Dec/2020 through 2021. In January 2022, more than 60 participants joined the first stakeholder's virtual meeting focused on opportunities in Central Appalachia
- In April 2022, the *Building Awareness of Sustainable Aviation Fuel* workshop sponsored by ASCENT in collaboration with CAAFI was held in Knoxville focused on opportunities in Tennessee.
- Planning to have the next virtual Central Appalachian regional meeting later this summer



The Sustainable Aviation Fuel Stakeholder group is excited to present a program for anyone interested in economic development and investment in Central Appalachia.

Many times, potential and existing businesses and developers are not aware of or overlook local and state economic development incentives. This meeting will highlight Central Appalachia with participating states presenting an overview of their incentives, resources and programs. This event will highlight those programs followed by Q & A session. VIRTUAL EVENT

**Thurs, Jan. 20
10:00 am EST**

Register for call information:
www.tinyurl.com/SAFStateIncentives

Thanks!

Questions or Comments?!

T. Edward Yu

tyu1@utk.edu